

NOTE:
 1.) ALL COORDINATES ARE TEXAS STATE PLANE, NORTH CENTRAL ZONE 4202, NORTH AMERICAN DATUM OF 1983.
 2.) ACCESS POINTS ARE APPROXIMATE.

127740
BOUNDARY DESCRIPTION
GREAT TRINITY FOREST PLANNED DEVELOPMENT

The following boundary description is for the Great Trinity Forest Planned Development, which consists of approximately 2,120.802 acres of land in the City of Trinity, Texas. The land is divided into several subareas, including Trinity Forest Lands, Trinity Mitigation Lands, Trinity Horse Park, Trinity Championship Golf Course, and Trinity Forest Lands. The description is based on the survey conducted by [Surveyor Name] on [Date]. The boundaries are shown on the attached plat, and the survey data is provided in the accompanying tables. The survey was conducted in accordance with the Texas Surveying Act, Chapter 81, of the Texas Government Code, and the rules and regulations of the Texas Board of Surveying. The survey was approved by the State Board of Surveying on [Date]. The survey data is provided in the accompanying tables. The survey was conducted in accordance with the Texas Surveying Act, Chapter 81, of the Texas Government Code, and the rules and regulations of the Texas Board of Surveying. The survey was approved by the State Board of Surveying on [Date].

TABLE NO. 1

TABLE NO. 2

TABLE NO. 3

TABLE NO. 4

TABLE NO. 5

TABLE NO. 6

TABLE NO. 7

TABLE NO. 8

TABLE NO. 9

TABLE NO. 10

TABLE NO. 11

TABLE NO. 12

TABLE NO. 13

TABLE NO. 14

TABLE NO. 15

TABLE NO. 16

TABLE NO. 17

TABLE NO. 18

TABLE NO. 19

TABLE NO. 20

TABLE NO. 21

TABLE NO. 22

TABLE NO. 23

TABLE NO. 24

TABLE NO. 25

TABLE NO. 26

TABLE NO. 27

TABLE NO. 28

TABLE NO. 29

TABLE NO. 30

TABLE NO. 31

TABLE NO. 32

TABLE NO. 33

TABLE NO. 34

TABLE NO. 35

TABLE NO. 36

TABLE NO. 37

TABLE NO. 38

TABLE NO. 39

TABLE NO. 40

TABLE NO. 41

TABLE NO. 42

TABLE NO. 43

TABLE NO. 44

TABLE NO. 45

TABLE NO. 46

TABLE NO. 47

TABLE NO. 48

TABLE NO. 49

TABLE NO. 50

TABLE NO. 51

TABLE NO. 52

TABLE NO. 53

TABLE NO. 54

TABLE NO. 55

TABLE NO. 56

TABLE NO. 57

TABLE NO. 58

TABLE NO. 59

TABLE NO. 60

TABLE NO. 61

TABLE NO. 62

TABLE NO. 63

TABLE NO. 64

TABLE NO. 65

TABLE NO. 66

TABLE NO. 67

TABLE NO. 68

TABLE NO. 69

TABLE NO. 70

TABLE NO. 71

TABLE NO. 72

TABLE NO. 73

TABLE NO. 74

TABLE NO. 75

TABLE NO. 76

TABLE NO. 77

TABLE NO. 78

TABLE NO. 79

TABLE NO. 80

TABLE NO. 81

TABLE NO. 82

TABLE NO. 83

TABLE NO. 84

TABLE NO. 85

TABLE NO. 86

TABLE NO. 87

TABLE NO. 88

TABLE NO. 89

TABLE NO. 90

TABLE NO. 91

TABLE NO. 92

TABLE NO. 93

TABLE NO. 94

TABLE NO. 95

TABLE NO. 96

TABLE NO. 97

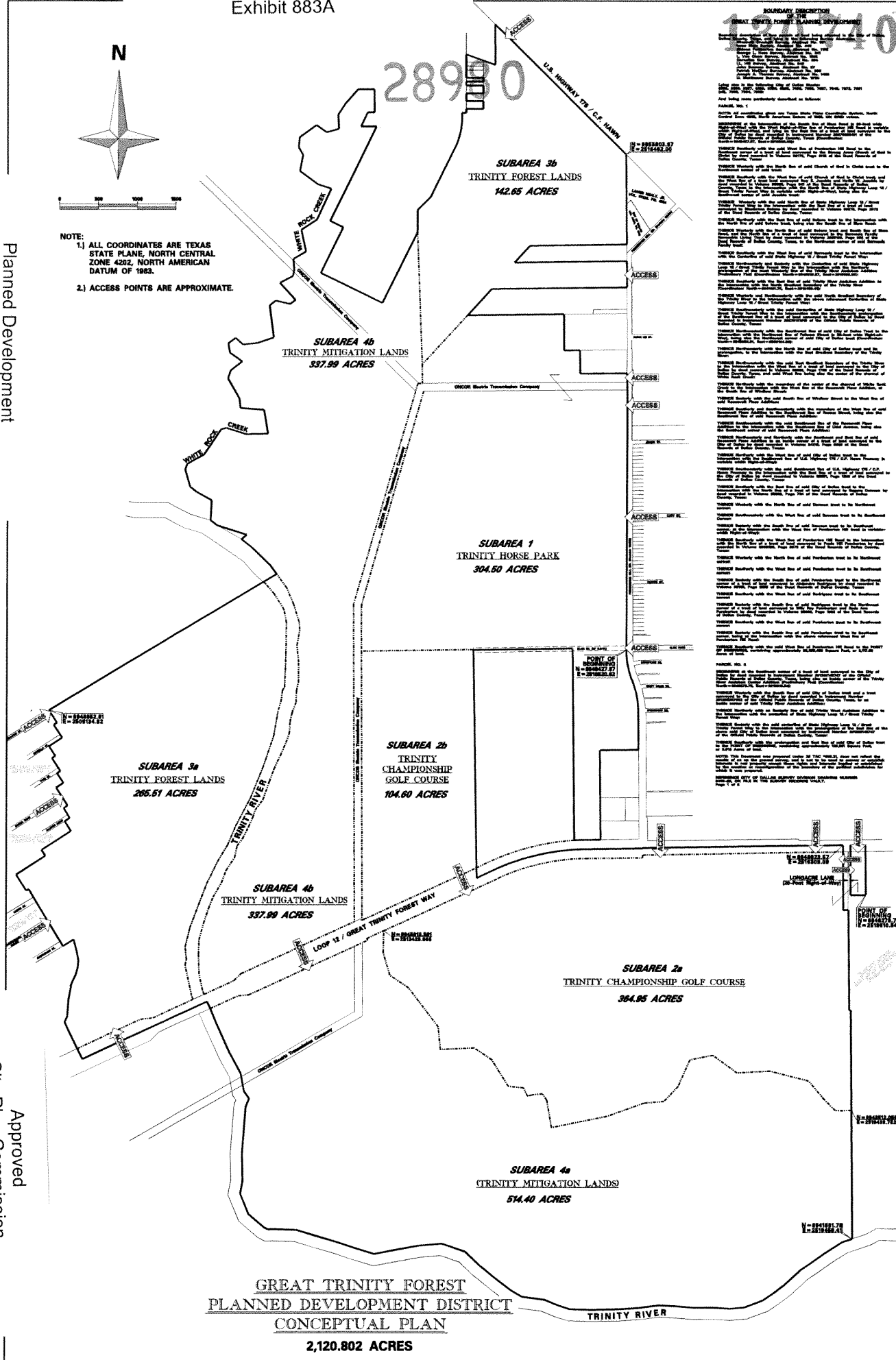
TABLE NO. 98

TABLE NO. 99

TABLE NO. 100

Planned Development District No. 883

Approved City Plan Commission April 4, 2013



**GREAT TRINITY FOREST
 PLANNED DEVELOPMENT DISTRICT
 CONCEPTUAL PLAN
 2,120.802 ACRES**

2123-195